



Stanford | MEDICINE
Continuing Medical Education

STANFORD OTOLOGY UPDATE 2022 EXHIBIT & SPONSORSHIP PROSPECTUS

**LIVE EXHIBIT HALL ON NOVEMBER 3-4, 2022
STANFORD, CALIFORNIA**

STANFORD CME

The Stanford Center for Continuing Medical Education (SCCME) is a global leader in the promotion of lifelong learning among professionals in healthcare. As such, we advance patient and population health and promote innovation by planning and implementing accredited continuing education activities to enhance the professional development of healthcare teams both locally and regionally, in the San Francisco Bay area and in the greater Pacific Region, as well as nationally and globally.

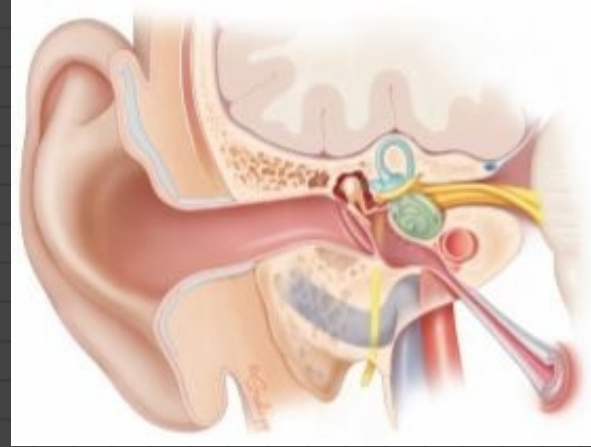
To accomplish this mission, we apply evidence and best practices from the education and implementation sciences to develop, accredit, and evaluate activities and initiatives designed to improve the skills, strategy, and performance of providers and healthcare teams and the delivery of patient care, ultimately with the goal of creating better health outcomes. By aligning our activities with the relevant competency frameworks, we support our learners as faculty, healthcare professionals, and respective teams in providing high value care to their patients and the communities they serve.

ABOUT US



November
3-4, 2022

EXHIBIT
HALL



STANFORD'S OTOTOLOGY UPDATE 2022

Stanford's Otology Update 2022 will address the effective diagnosis and management of common, clinically relevant otologic disorders. The course content is designed to enhance clinical practice of providers caring for patients with otologic disorders. It will cover topics involving all aspects of diagnosis, medical management, and surgical intervention, as well as applying risk reduction techniques, ordering, and interpreting diagnostic testing, and evaluating evidenced-based data. The course will consist of didactic lectures, panel/ case discussions, and hands-on interactive sessions with the faculty. An on-line option for remote learning will also be provided.

This national course is intended for physicians, audiologist, residents, fellows, and medical students that specialize in Otolaryngology (ENT). Dr. Nikolas Blevins, Larry and Sharon Malcolmson Professor in the School of Medicine and Professor of Otolaryngology - Head & Neck Surgery (OHNS) and, by courtesy, of Neurosurgery will serve as the Course Director. This course will take place on November 3-5, 2022, in Stanford, California.

At the conclusion of this activity, learners will be able to:

1. Articulate the factors common to neurodiversity and intersectionality.
2. Identify the impact of systemic/societal bias related to communication and identity on neurodivergent individuals.
3. Describe at least three possible risk factors of suicidal thoughts and behaviors in autistic people.
4. Discuss at least four communication differences in autistic people.
5. Identify at least two crisis supports and resources for the autism community.



Stanford | MEDICINE

Continuing Medical Education

EXHIBIT OPPORTUNITIES

	Platinum	Gold	Silver
One 6 ft. exhibit booth for two days	✓	✓	✓
Company recognition during opening and closing remarks	✓	✓	✓
Company recognition on website	✓		
Exhibitor Badges for admission	Three	Two	One
Exhibitor Fee	\$20,000	\$10,000	\$5,000

NOTE

*Exhibitor registration does not include CME credit.

Sponsor only options are available.

Registration as a participant is required, to qualify for CME credit.

The deadline for commitment is: Friday, October 21, 2022

2 day exhibit hall - 3 days course

The exhibit hall will be for the live activity only, the virtual attendees will not have access.

CONTACT

STANFORD MEDICINE

CAROLYN TAYLOR & DR. BLEVINS

Program Coordinator & Course Director

Contact for exhibit logistics

cet02@stanford.edu

650-862-2197

CLICK HERE TO
REGISTER

BY DEANNA HUDSPETH GRANTS SPECIALIST

Deanna is responsible for partnerships and collaborations with external companies. She will assist in planning and executing agreements, exhibits, sponsorship and grant income on behalf of Stanford CME. All questions regarding compliance, letter of agreements and payments, send to her. cmegrants@stanford.edu.